



Begin bike path restriping

Re-paint restroom

2 - Park benches

Re-pave parking area and re-paint parking stripes and ADA logo; fill space between back of curb and sidewalk with HMA including

Asphalt repair, standing water issue ~15 LF (2B-SW)

Tree Removal (8 trees), asphalt repair (3B)

2 - Park benches

Asphalt repair, standing water issue. ~48 LF (1B-SW)

2 - Park benches

Asphalt repair, standing water issue. ~61 LF (1P-SW)

2 - Park benches

Asphalt repair, standing water issue. ~35 LF (2P-SW)

Asphalt repair, standing water issue. ~47 LF (3P-SW)

Asphalt repair, ~15 LF (4P)

Asphalt repair (~200 LF) (5P)

©2010 Google

© 2010 Google



1 - Park bench

2 - Park benches

Asphalt repair (~90 LF) (6P)

2 - Park benches

Asphalt repairs (~20 LF) (4B)

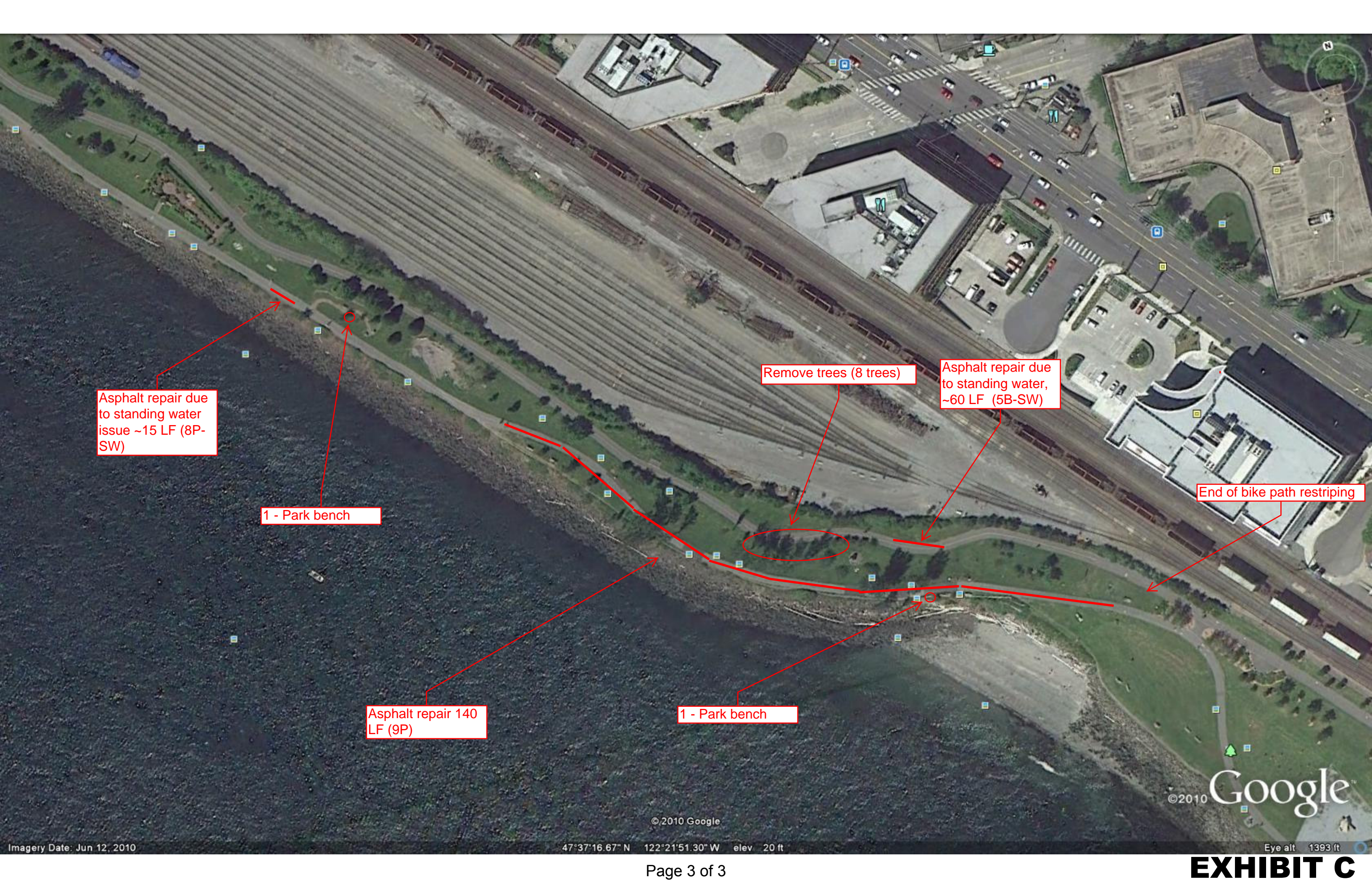
1 - Park bench

Asphalt Repair ~20 LF (7P)

2 - Park benches

© 2010 Google

Google
©2010



Asphalt repair due to standing water issue ~15 LF (8P-SW)

1 - Park bench

Asphalt repair 140 LF (9P)

1 - Park bench

Remove trees (8 trees)

Asphalt repair due to standing water, ~60 LF (5B-SW)

End of bike path restriping

©2010 Google

© 2010 Google

47°37'16.67" N 122°21'51.30" W elev 20 ft

Eye alt 1393 ft